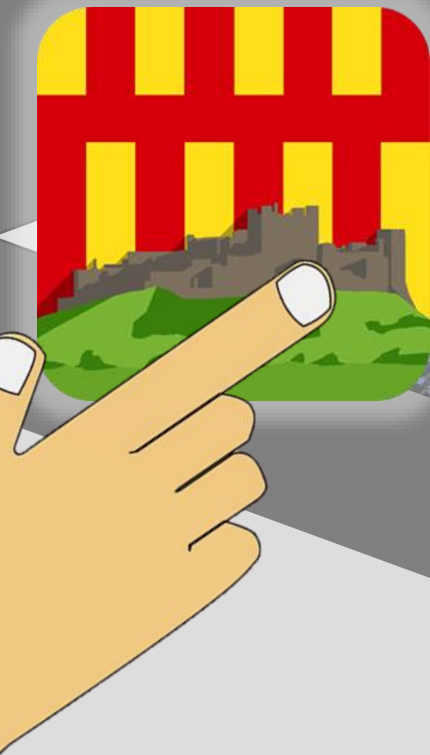


Explore Northumberland

Hold a county in your hand.



User Manual

In Partnership with





Contents

1. Accessing the App 3
2. Your Profile 4
2.1 Registering 4
2.2 Logging In 4
2.3 Forgotten Password 5
3. Map View 5
3.1 Navigation 6
3.2 Attraction Categories 7
3.3 Filtering Attractions 8
3.4 Searching for Attractions 9
4. List View 10
4.1 Navigation 10
4.2 Filtering Attractions 11
4.3 Searching for Attractions 11
5. Side Navigation Bar 12
5.1 Visit our Website 12
5.2 Logging Out 13
6. Viewing Attraction Information 13
6.1 Information 14
6.2 Opening Times 14
6.3 Address & Contact 15
7. Contact Us 15
References 16

1

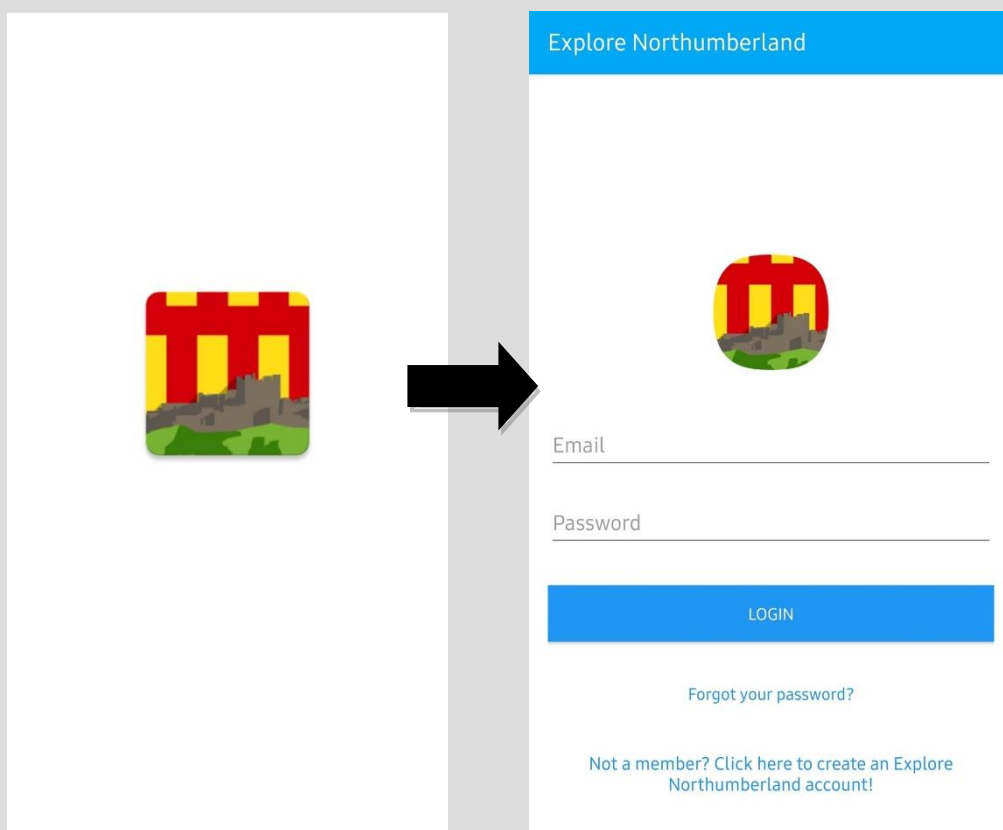
Accessing the App

Download the app directly from the link on our website:

<http://homepages.cs.ncl.ac.uk/2018-19/CSC2022/Team09/website/#download>

Once fully downloaded on your Android device, the app can be accessed by clicking directly on the icon on the page, or by clicking “Open” from the app directory in your phone’s File Manager.

After opening the app, a white screen should appear with the Explore Northumberland logo centred on it. Upon loading, the screen will change to display a login screen.



2

Your Profile

Your profile is the only way to access the app. Find below important information on how to create and protect your personal profile.

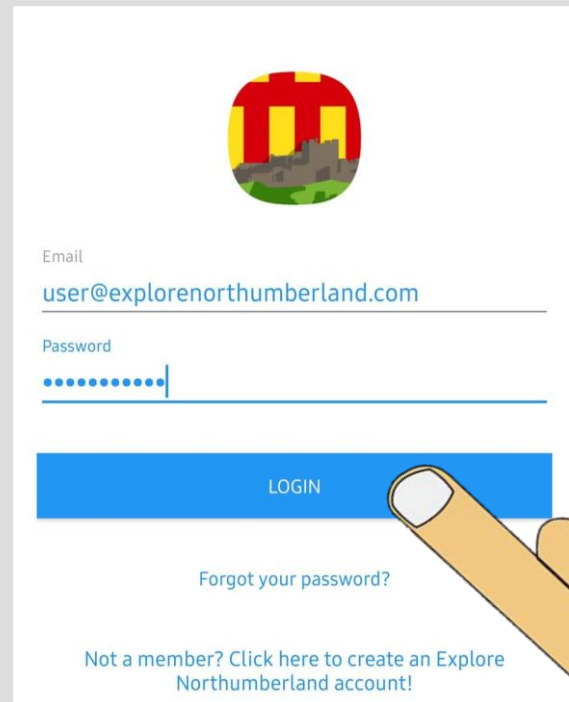
2.1 Logging In

This is your first point of interaction with the app.

The login screen can be used by anyone returning to the app.

Simply type in the email you registered with and the respective password. Then click the “Login” button to enter the app.

This step can’t be done if you don’t have a pre-existing account. To create an account, follow the section below.



Email
user@explore northumberland.com

Password
.....|

LOGIN

Forgot your password?

Not a member? Click here to create an Explore Northumberland account!

2.2 Registering

To register your account, click the link located at the bottom of the login page. Then fill in the email and password fields and press the “Register” button, this will create your account and grant you access to the app.

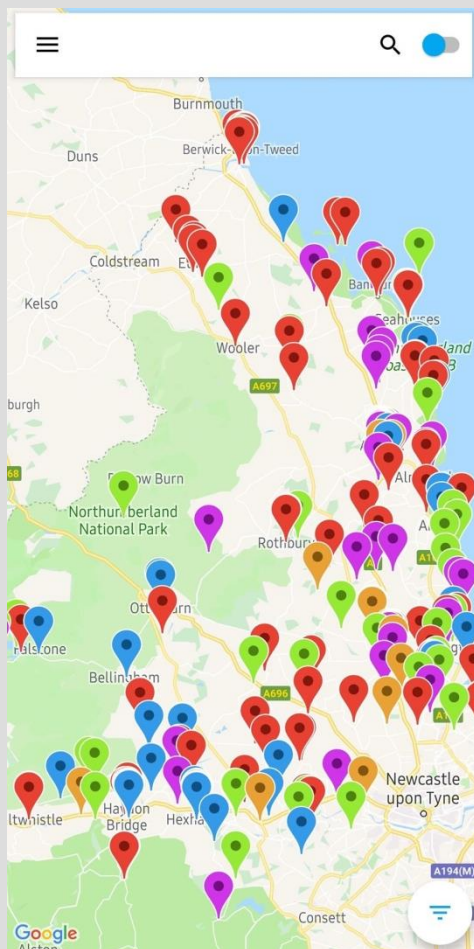
Not a member? Click here to create an Explore Northumberland account!

2.3 Forgotten Password

If you have forgotten your password, click on the 'Forgot your password?' link below the login button.

There you will be asked to enter the email registered to your account and an email will be sent with instructions to reset your password.

3 Map View



This view will be the default home screen when you open the app.

Map View allows you to see the locations of the attractions in Northumberland with colour coded pins categorising them into the types of attraction they are.

The following subsections will detail how to navigate the map view, filter and understand the types of attractions, as well as how to search and access other pages.

3.1 Navigation

Navigation around the Map

To view and explore attractions, navigation around the map is intuitive with dragging your finger across the screen to scroll the map and zooming by pinching/expanding fingers.

Navigation to Other Pages

All pages can be accessed via the Map View.

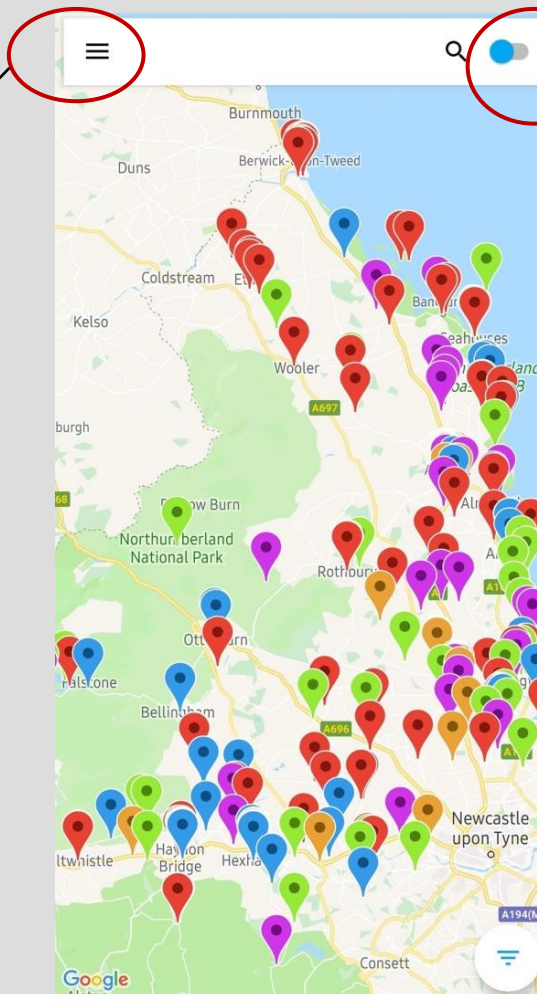
The toggle (visible on the top right) changes the view to **List View** when pressed.



Upon pressing the hamburger menu on the top left, the **Side Navigation Bar** becomes visible.



Opens Side
Navigation
Bar



Map View/
List View
Toggle

3.2 Attraction Categories

A guide to the colour coded categories of Explore Northumberland



Sightseeing

This category shows all the scenic locations for you to enjoy such as castles, churches and tourist-specific attractions



Shopping

Displays all shopping centres as well as local treasures with handmade crafts and souvenirs



Nature

This category shows all the natural attractions on offer such as gorges, national parks and gardens. Also includes outdoor activities such as rock-climbing, paintball and more



Food & Drink

Displays all the nearby eateries including popular chains, high-end restaurants, bistros and local cafés



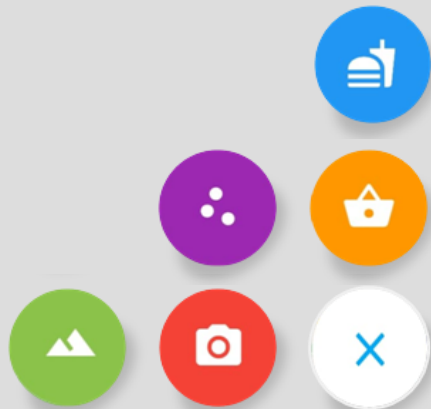
Miscellaneous

Places refusing to fit into the above categories, including but not limited to golf clubs, car parks and indoor activity centres

3.3 Filtering Attractions

Category Menu

To see the categories to filter, click the button on the bottom left of Map View. This will open an overlaying Category Menu. Close the menu by clicking on the 'X' icon.



By default, all the icons will be on – all types of attraction on display

Filtering



Filtering is achieved by **filtering out**. By pressing a category, you are excluding it from being displayed.

You know when a category is filtered out because the button becomes inverted.



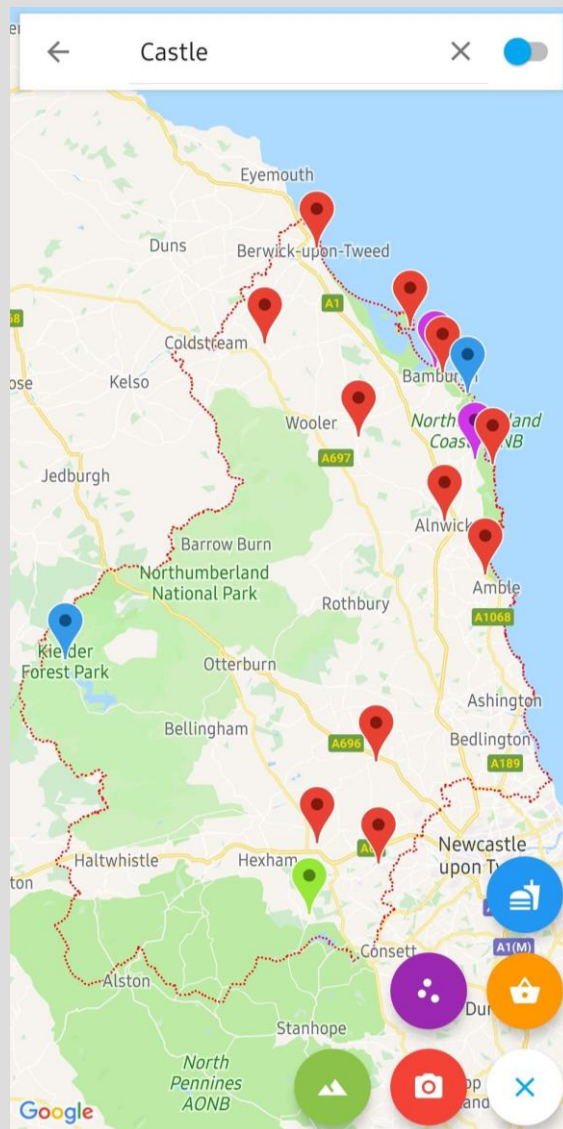
The example to the left shows the result of pressing every button except for Sight-seeing, making the map display only the most photo-worthy attractions.

3.4

Searching for Attractions

To search, type into the search bar – located at the top of the Map View

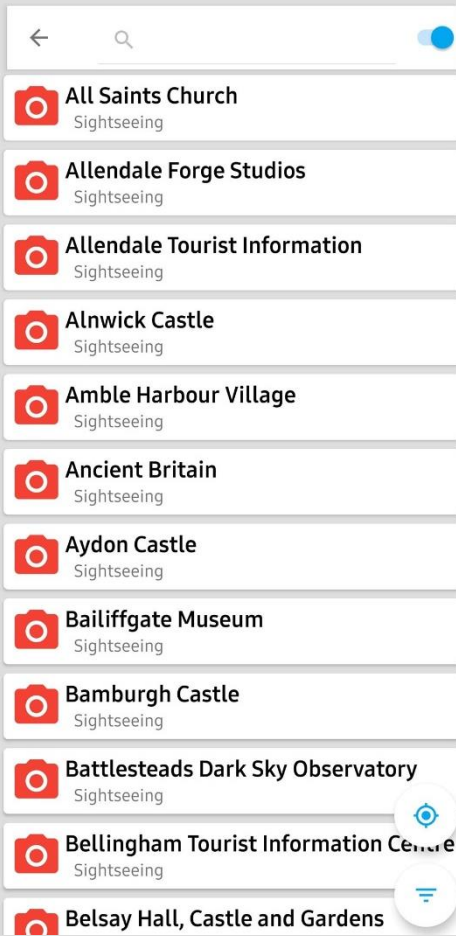
If you want to see where certain attractions are located (e.g. castles), just type in the keyword “castle” and only the attractions relating to castles will be displayed.



It is also possible to search for a specific attraction.

4

List View



This view will be the default when you open List View.

List View allows you to see the attractions in Northumberland listed in alphabetical order.

Below the name of the attraction is the category of the attraction. On the left column, the icon portraying that category is displayed.

The following subsections will detail how to navigate the list view, filter and search attractions, as well as how to access other pages.

4.1 Navigation

All pages can be accessed via the List View.



The toggle (visible on the top right) changes the view to **Map View** when pressed.

Upon pressing the hamburger menu on the top left, the **side navigation bar** becomes visible.

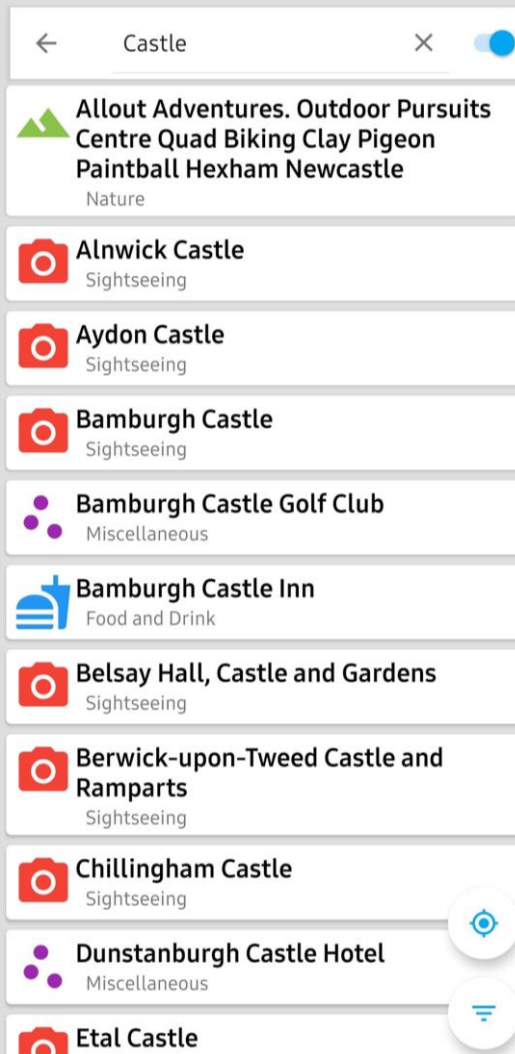


4.2 Filtering Attractions

Filtering attractions in List View works exactly the same as in Map View (see **3.3 Filtering Attractions**).

The only difference being that the menu is overlaid over List View and the resultant display will not show the location of the filtered attractions but rather their names and categories.

4.3 Searching for Attractions



Searching for attractions in List View works exactly the same as in Map View (see **3.4 Searching for Attractions**).

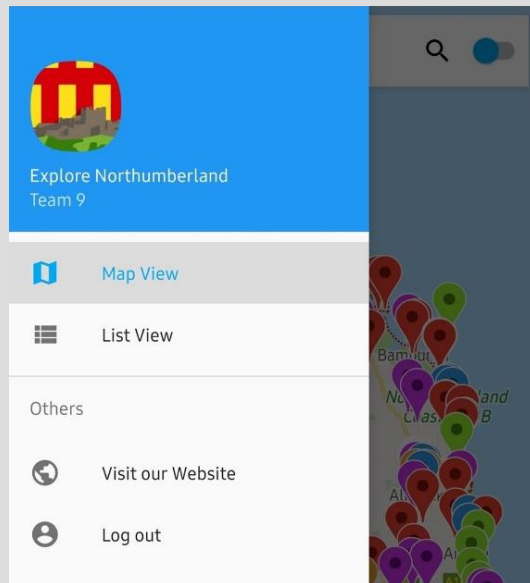
For example, if you want to see where certain attractions are located (e.g. castles), just type in the keyword “castle” and only the attractions relating to castles will be displayed.

The only difference is that the resultant display will not show the location of the filtered attractions but rather their names and categories.

It also is possible to search for a specific attraction.

5

Side Navigation Bar



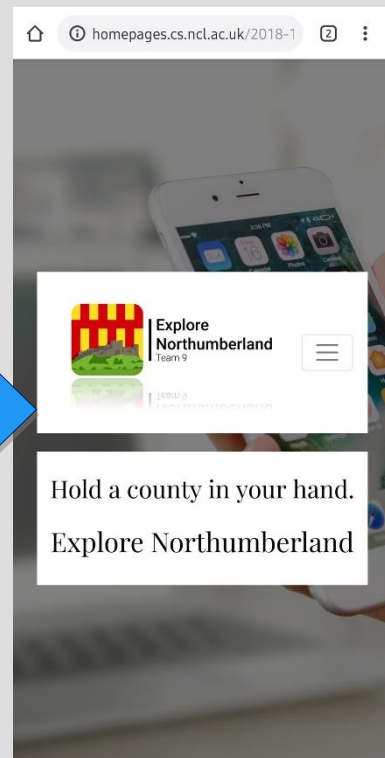
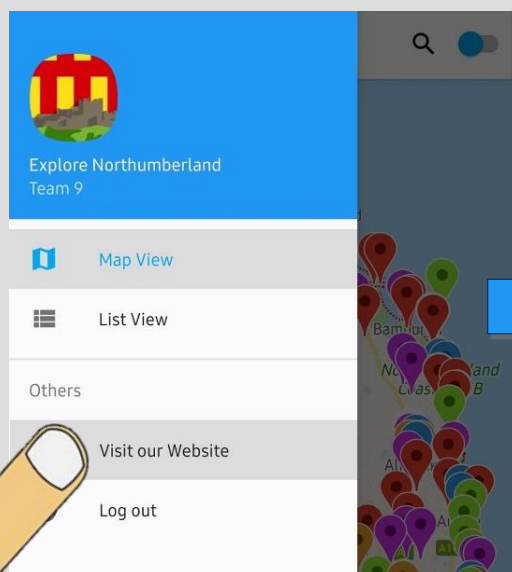
The side navigation bar is the best way to learn more about the app and log out of your profile. It also serves as an alternative way of switching from the Map View to List View and vice versa.

It is accessible from any other page via the hamburger menu on the top left of the screen.

5.1

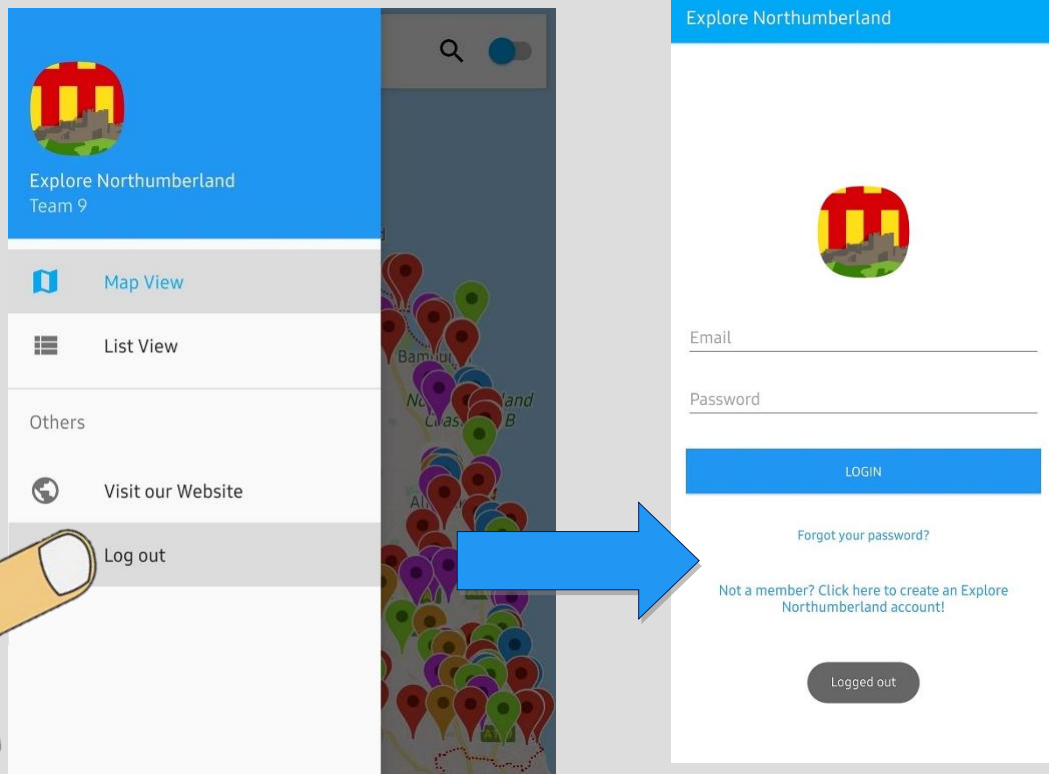
Visit our Website

To learn more about the app, the team, or the features click the 'Visit Our Website' tab located in the 'Others' section of the Side Navigation Bar. This will take you to a mobile version of the Explore Northumberland website.



5.2 Logging Out

To log out, click the 'Log out' tab located in the 'Other' section of the Side Navigation Bar. This will take you to the login page.



6 Viewing Attraction Information



To find more about an attraction, simply press on the coloured pin (Map View), or the attraction name itself (List View)

6.1 Information

INFORMATION	OPENING TIMES	ADDRESS & CONTACT
<p>Alnwick Castle is a castle and country house in Alnwick in the English county of Northumberland. It is the seat of His Grace The 12th Duke of Northumberland, built following the Norman conquest and renovated and remodelled a number of times. It is a Grade I listed building and as of 2012 received over 800,000 visitors per year.</p>		
Rating:	4.5 / 5	
Website:	alnwickcastle.com	

This page serves to give you an idea of what the attraction has to offer, including descriptions, reviews, and a link to the attraction website if you want more in-depth information.

To access this, press the “Information” tab on the Viewing Attraction Information menu. This tab also serves as the default.

6.2 Opening Times

Know the opening times to plan your trip better...

INFORMATION	OPENING TIMES	ADDRESS & CONTACT
Monday:	10.00am - 5.30pm	
Tuesday:	10.00am - 5.30pm	
Wednesday:	10.00am - 5.30pm	
Thursday:	10.00am - 5.30pm	
Friday:	10.00am - 5.30pm	
Saturday:	10.00am - 5.30pm	
Sunday:	10.00am - 5.30pm	

To access the “Opening Times” page, press the respective tab on the Viewing Attraction Information menu.

6.3

Address & Contact

INFORMATION	OPENING TIMES	ADDRESS & CONTACT
Full Address:	Alnwick Castle, Alnwick, Northumberland, NE66 1NG	
Postcode:	NE66 1NQ	
Phone:	01665 511100	

The “Address & Contact” page aids you with travelling and booking your trips by providing addresses and contact information for each attraction.

To access this, press the “Address & Contact” tab on the Viewing Attraction Information menu.

7

Contact Us

If you have any further questions about the app, do not hesitate to get in touch with our team at:

Team9northumberland@gmail.com





References

- "**Allendale Forge Studios**", *TripAdvisor*, Feb 2018,
https://www.tripadvisor.co.uk/Attraction_Review-g2070112-d3317912-Reviews-Allendale_Forge_Studios-Allendale_Hexham_Northumberland_England.html#photos;aggregationId=&albumid=101&filter=7&ff=301382222
 Accessed 22 Apr. 2019.
- "**Alnmouth Golf Course**", *alnmouthgolfclub*, 2019,
<https://www.alnmouthgolfclub.com/visitors>, Accessed 22 Apr. 2019.
- "**Amble Puffin Festival: Birdy Good Entertainment**", *LivingNorth*, May 2015,
<https://www.livingnorth.com/yorkshire/people-places/amble-puffin-festival-birdy-good-entertainment>
 Accessed 22 Apr. 2019.
- "**Blyth beach huts at sunset**", *philreayphotography*, Phil Reay, 2019,
<https://www.moreinmorpeth.co.uk/stores>, Accessed 22 Apr. 2019.
- "**Hadrian's Wall**", *Your Northumberland*, Andrew Bothamley, 30 Sep 2015,
<http://www.yournorthumberland.co.uk/area-guides/hadrians-wall>, Accessed 22 Apr. 2019.
- "**Hidden beauty spots in Northumberland - nine places you must visit in the county**"
ChronicleLive, Barbara Hodgson, 16 April 2019,
<https://www.chroniclive.co.uk/whats-on/family-kids-news/hidden-beauty-spots-northumberland-nine-13096075>
 Accessed 22 Apr. 2019.
- "**Holy Island**", *Ross Cottages*, 2019,
<https://www.rosscottages.co.uk/northumberland-tourism.cfm?Category=Activities>, Accessed 22 Apr. 2019.
- "**Morpeth High Street**", *moreinmorpeth*, 2019,
<https://www.moreinmorpeth.co.uk/stores>, Accessed 22 Apr. 2019.
- "**Northumberland National Park**", *northumberlandnationalpark*, 2019,
<https://www.northumberlandnationalpark.org.uk/>, Accessed 22 Apr. 2019.

This document also uses images from [Pixabay](#) under Creative Commons License, available [here](#).